



BuildMan[®]
Grade

RESIDENTIAL WELDED DRYWALL CART

HEAVY-DUTY

- Thick, overhanging plastic deck enables easy sliding of panels & prevents chipping of gypsum boards
- Optimized inclination for improved stability & no tipping
- Designed to be loaded directly from a Boom Truck Lift
- Recessed back for movement in tight corners
- Larger, rounded handling bars prevents wall damage

METALTECH[®]



15

GYPSUM BOARDS

2,000 lb

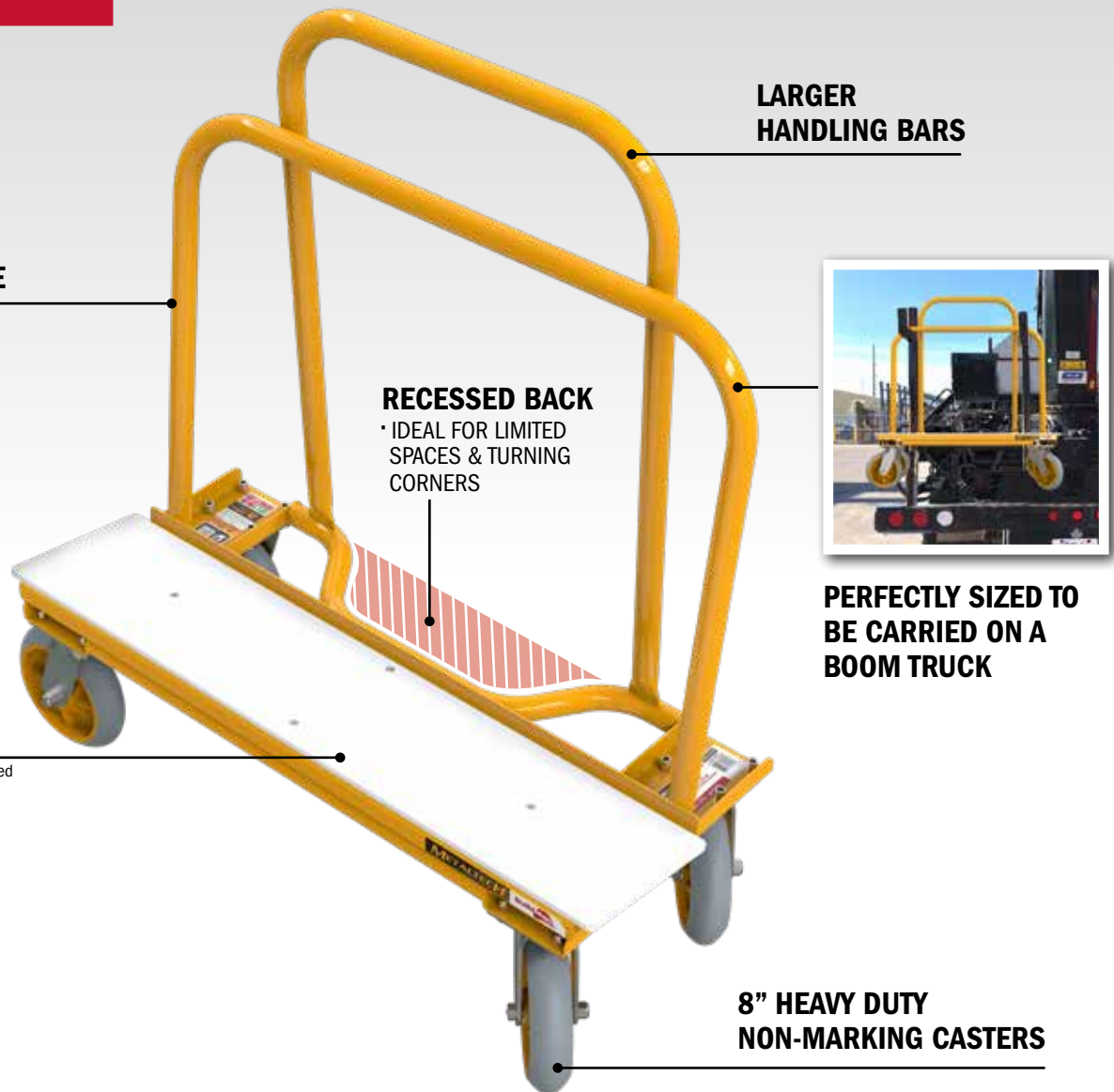
LOAD CAPACITY

**BUILT TOUGH FOR
SAFETY**

BUILDMAN® RESIDENTIAL WELDED DRYWALL CART

BUILT FOR SAFETY

You can trust Metaltech BuildMan® Grade products for their contractor specific features, such as higher load capacity and heavy-duty construction for more demanding tasks. This dolly gives you the ability to carry gypsum boards and a wide range of materials, including panels, plywood, sheetrock, slabs, and more.

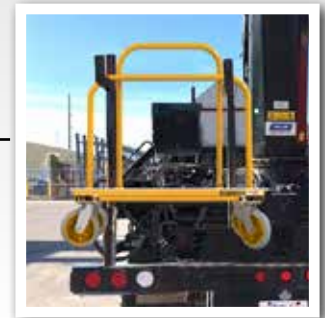


**STURDY
WELDED FRAME**

**LARGER
HANDLING BARS**

RECESSED BACK

· IDEAL FOR LIMITED
SPACES & TURNING
CORNERS



**PERFECTLY SIZED TO
BE CARRIED ON A
BOOM TRUCK**

**THICK PLASTIC
SLIDE DECK**

Available as a replacement part when used

**8" HEAVY DUTY
NON-MARKING CASTERS**

BUILDMAN® RESIDENTIAL WELDED DRYWALL CART

ASSEMBLED DIMENSIONS (WXDXH)	40 X 16.75 X 44 IN. (101.6 X 42.6 X 111.8 CM)
PACKAGE DIMENSIONS (WXDXH)	40 X 16.75 X 34.5 IN. (101.6 X 42.6 X 87.6 CM)
PLATFORM DIMENSIONS	9.5 X 40 IN. (24.1 X 101.6 CM) CAN CARRY UP TO 15 GYPSUM BOARDS OF 5/8 IN. (16 MM)
FINISH	POWDER COATED - YELLOW
CASTERS	FOUR 8 IN. (20 CM) SWIVEL CASTERS WITH DIRECTIONAL LOCK
EASY SLIDE DECK	POLYETHYLENE (UHMWPE)
HANDLE BAR	1-11/32 IN. (3.4 CM) OUTSIDE DIAMETER, 13 GAUGE STEEL
WEIGHT	65.91 LB (29.9 KG)
LOAD CAPACITY	2,000 LB (907 KG)
MODEL	I-BMD1931YGR
UPC	778300004201

METALTECH

WWW.METALTECH.CO

1 800 363-7587